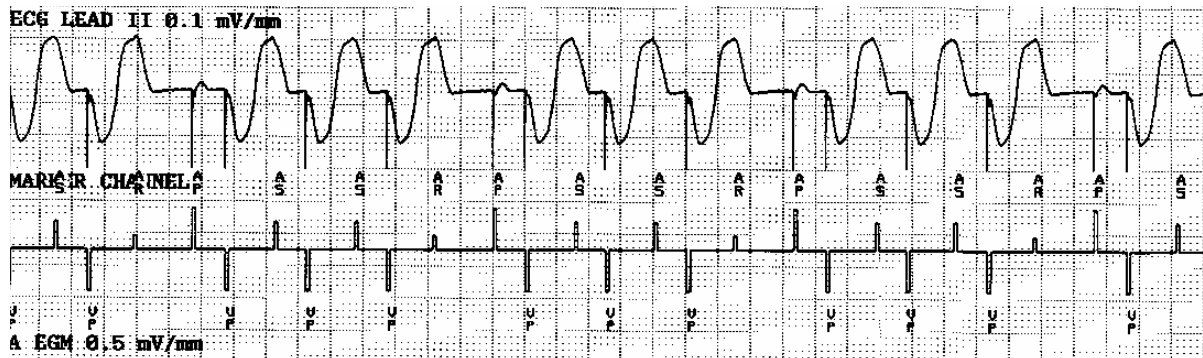


The tracing below was recorded from 68 year old man who attended the pacemaker follow-up clinic. He had a DDD pacemaker implanted for complete heart block. He complained of some shortness of breath on exertion but was otherwise fit and well.



What parameter should be re-programmed to improve his symptoms:

- A. AV delay
- B. Lower rate interval
- C. Post Ventricular Refractory Period
- D. Post Ventricular atrial blanking
- E. Upper rate interval

A 58-year-old male with ischaemic cardiomyopathy is referred for consideration of device therapy. His transthoracic echocardiogram confirms severe LV systolic dysfunction and his 12 lead ECG is reported as sinus rhythm with a QRS duration of 144ms. He is NYHA class I and has no documented ventricular tachyarrhythmias. Which of the following medications would provide him with prognostic (survival) benefit?

- A. Amiodarone
- B. Digoxin
- C. Lisinopril
- D. Spironolactone
- E. Verapamil

During a device implantation procedure a trainee cardiac physiologist is present in the cardiac catheterisation laboratory. They are asked to stand away from the radiation source by the radiographer. Doubling your distance from the radiation source will reduce the individuals radiation exposure rate by?

- A. 1/2
- B. 1/3
- C. 1/4
- D. 1/6
- E. 1/8